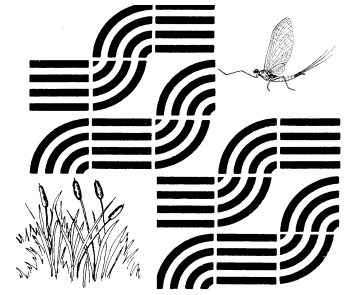


# GEORGIA

# Adopt-A-Stream

Volume 17, Number 6 November/December 2010  
Allison Hughes and Tara Muenz, Editors



Department of Natural Resources  
Environmental Protection Division

## Mark Your Calendar for the Confluence March 26, 2011 Gwinnett Environmental & Heritage Center

Confluence is a one-day event designed to support and educate our volunteers. As the word implies, volunteers will come together from the headwater streams, the coastal estuaries and everywhere between to further educate themselves about our waterways and nonpoint source pollution. This will be a great opportunity to share experiences, knowledge and advice, as well as honor the collective efforts that have positively influenced water quality within the State of Georgia over the past 15 years.

### Highlights For Confluence 2011

#### **Awards Banquet & Luncheon**

Award winners for 2010 will be recognized at the Awards Luncheon held in conjunction with the Confluence. Registration fees will be waived for award winners. Nominate your group for an award on-line at [www.GeorgiaAdoptAStream.org](http://www.GeorgiaAdoptAStream.org) (the deadline is January 10, 2011) or submit it to the State Office.

#### **Travel Stipends**

New this year, we will be awarding travel stipends for active volunteers who will be traveling more than 120 miles one way. Travel stipends are funded through the generous support of our sponsors, who value the importance of volunteer monitoring. Active volunteers who wish to be considered for these funds will need to complete the on-line application or contact the State Office for a paper version.

#### **Registration Opens Mid-December**

With support of our sponsors and in-kind supporters, we are again able to keep the registration fee at \$20. Full registration includes a unique 2011 Confluence t-shirt, breakfast, lunch, conference goodie bag and much more. In addition to the registration fee, volunteers can make a donation to the travel fund, to support other volunteers who are traveling long distances.

#### **Confluence Sessions & Topics**

Macroinvertebrate Identification \* Watershed Stewardship \* Stream Bank Restoration

Homemade Monitoring Equipment \* Visual Stream Assessments

Volunteer Presentations \* Protecting Georgia's Waterways

**For more information visit [www.GeorgiaAdoptAStream.org](http://www.GeorgiaAdoptAStream.org) and click on the Confluence link.**

## Adopt-A-Stream Welcomes Shelly Kruger as the New Coastal Adopt-A-Wetland Coordinator

The Coastal Adopt-A-Wetland program welcomed Shelly Kruger aboard in October as their new Volunteer Coordinator. She has been working for the University of Georgia Marine Extension Service at the Savannah campus since February 2010, where she recently completed a GIS inventory of structurally impacted salt marshes in Coastal Georgia.

Shelly was a 2009 John A. Knauss Marine Policy Fellow and spent a year in Washington, D.C. working for the National Oceanic and Atmospheric Administration (NOAA) in the National Marine Fisheries Service. She worked in the Office of Protected Resources and one of her duties was to assist the U.S. delegation in preparation for the 2010 Convention on International Trade in Endangered Species (CITES). Shelly is happy to be back in Savannah and working with volunteers who dedicate their time to monitoring coastal wetlands.



She will be traveling the coast in the coming months to meet volunteers and will be offering many workshops, all of which can be viewed at [www.GeorgiaAdoptAStream.org](http://www.GeorgiaAdoptAStream.org). If you would like to renew your reagents, schedule a workshop, or just chat with Shelly, she can be reached at:

20 Ocean Science Circle, Savannah, GA 31411  
912-598-2348 \* [kruger@uga.edu](mailto:kruger@uga.edu)

## Tip of the Month: Enter Your Data Promptly

We would like to encourage volunteers to promptly enter their data into the Adopt-A-Stream database. This helps the State Office and our Local Coordinators in the following ways:

### **Problem Detection**

Prompt entry allows us to act quickly when a problem is detected. If there is a time lapse between the date of collection and the date of entry, we may not be able to determine the cause of the impairment.

### **QA/QC**

All data entered into the Adopt-A-Stream database is reviewed by our database manager. It is evaluated based on the normal range for each parameter and is flagged if the data falls outside normal limits. If outliers are present, we communicate with the monitoring group to verify if the data is accurate and determine if further testing is needed.

### **Reporting**

Data collected by our volunteers is very important for reporting purposes. Data is used in reports to local, state and federal governments to show the value of volunteer monitoring. Many of these reports are submitted on a monthly basis, so prompt data entry is essential. Aside from the water quality data, numbers such as time spent monitoring and number of volunteers at each monitoring event are used in these reports.

**Reminder:**  
**AAS Awards Deadline is January 10, 2011**

## Mark Your Calendars!

### **Submit your 2010 Rivers Alive Cleanup Data**

If you held a waterway cleanup in 2010, final tally data can be turned in at [www.riversalive.org](http://www.riversalive.org) by clicking on "Register and Submit Data" or by calling 404.675.6240. Pictures can also be uploaded through the website. Let us know about all of the great things Rivers Alive volunteers have been up to this year!

### **Youth Environmental Symposium Application Deadline: January 20, 2011**

The Georgia Conservancy is calling for entries for the 2011 Youth Environmental Symposium (YES), an interdisciplinary educational program designed to inspire middle- and high-school students to develop creative solutions to environmental problems in their local communities. [www.georgiaconservancy.org](http://www.georgiaconservancy.org)

### **11<sup>th</sup> Annual Georgia River Network Conference: January 25-26, 2011**

Georgia River Network (GRN) works to ensure a clean water legacy by engaging and empowering Georgians to protect and restore our rivers from the mountains to the coast. Join GRN and Adopt-A-Stream at the Chattahoochee Nature Center in Roswell, GA to learn how you can do your part to protect Georgia's water resources. [www.garivers.org](http://www.garivers.org)

### **Environmental Education Alliance Conference: March 11, 2011**

Theme: Sustaining a Changing World: Environment, Economy, and Community. The conference, to be held at Kennesaw State University, will include presentations, exhibits and workshops for formal and non-formal environmental educators. [www.eealliance.org](http://www.eealliance.org)

### **World Water Day: March 22, 2011**

Celebrate World Water Day by organizing an event in your community. This is a great way to meet your group's education and outreach goals. [www.worldwaterday.org](http://www.worldwaterday.org)

Please visit our calendar of events at [www.GeorgiaAdoptAStream.org](http://www.GeorgiaAdoptAStream.org) for upcoming monitoring workshops and Adopt-A-Stream events.

## Welcome New Groups!

**Kinchafoonee**, Lee County  
**Brownwood Creek Stream Team**, DeKalb County  
**Coney Creek Watchdogs**, Fulton County  
**Andrew's Creek Watch**, Fulton County  
**Waterbugs**, Liberty County  
**Eyes on the Upper Flint**, Meriwether, Pike, and  
Upson Counties  
**The Hans**, Fulton County  
**Kinchafoonee Krew**, Lee County

**Shamrock Middle School**, DeKalb County  
**Briar Site 1**, Columbia County  
**Cowart Monitoring Group**, Chatham County  
**M & K Hall**, Floyd County  
**Woodmere Alliance**, DeKalb County  
**Maribeth Leaman**, Fulton County  
**Southland Stream Team**, DeKalb County  
**Kahle**, Cobb County  
**Girl Scouts Troop 2910**, Cobb County

**Newton High Environmental Science Class**, Newton County

Thank you for joining the Adopt-A-Stream & Coastal Adopt-A-Wetland programs. Your data is very important to our goal of protecting and improving water quality within the State of Georgia.

# Confluence: Call for Volunteer Presentations & Posters

Have you ever wanted to gain experience presenting the data that you have collected or simply wanted to share your Adopt-A-Stream monitoring or outreach program with other volunteers? During Confluence there will be an opportunity for you and/or your group to present to the volunteer monitoring community in a friendly, relaxed environment.



## Here are some ideas to get you started:

- \* Overview of your watershed wide monitoring efforts
- \* Interesting results from your research
- \* Successful partnerships
- \* Actions that have improved water quality
- \* Unique outreach activities
- \* Recruiting and sustaining volunteers
- \* Fundraising strategies that work

If you would like to present an oral or poster presentation at Confluence, please contact Tara Muenz at 404.675.1635 or [tara.muenz@gaepd.org](mailto:tara.muenz@gaepd.org).

Please visit our calendar of events at [www.GeorgiaAdoptAStream.org](http://www.GeorgiaAdoptAStream.org) for upcoming monitoring workshops and Adopt-A-Stream events.

The Georgia Adopt-A-Stream Newsletter is published six times per year. For more information about the Georgia Adopt-A-Stream program or to contribute to the newsletter, call or write to:

**Georgia Adopt-A-Stream**  
**Environmental Protection Division**  
**4220 International Parkway, Suite 101**  
**Atlanta, GA 30354**  
**404.675.6240**  
**[www.GeorgiaAdoptAStream.org](http://www.GeorgiaAdoptAStream.org)**

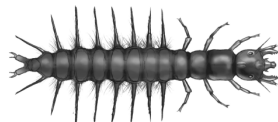
**Go Blue! Sign up for our  
E-newsletter by emailing  
[AAS@gaepd.org](mailto:AAS@gaepd.org)**



Dragonfly



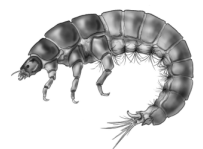
Riffle Beetle



Dobsonfly



Stonefly



Net Spinning Caddisfly