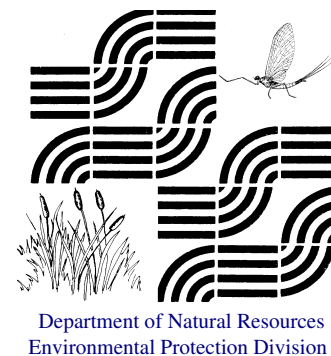


GEORGIA

Adopt-A-Stream

Volume 15, Number 3, May / June 2008
 Andrea Sarisky, Editor



Local Coordinators Bring Growth, Success to Adopt-A-Stream



Local coordinators meet at Gwinnett Environmental Heritage Center in May 2008.

Georgia Adopt-A-Stream's more than 50 local coordinators and trainers have helped the state-run program to triple in size over the past ten years by training and coordinating volunteers at the local level.

Georgia is unique in that the state Adopt-A-Stream program relies so heavily on these local coordinators and trainers to provide local training of volunteers. This umbrella approach towards coordination of the volunteer monitoring program has resulted in phenomenal success. Between 1999 and 2007, the number of workshops held each year almost tripled, with the number of certifications rising at the same rate.

With demand only increasing for Georgia Adopt-A-Stream's services and only two state coordinators and one to two part-time staff at the state level since 1998, local coordinators and trainers have proven instrumental in helping the program attain the capacity to train over 10,000 volunteers in the past decade.

Utilizing this approach has also benefited Georgia Adopt-A-Stream by providing a local advantage. Local coordinators and trainers know their watershed best and are better able to connect with local resources to promote the program. They are also able to assist local groups more readily. Having

coordinators and trainers at the local level allows state coordinators to target less-served areas and focus on programmatic needs.

Georgia Adopt-A-Stream is looking for more local trainers to continue the process of locally training and certifying volunteers statewide. To become a coordinator, one must first be certified in the Adopt-A-Stream visual, chemical or biological monitoring programs, and then complete the trainer certification workshop in order to train new volunteers.

Benefits of becoming a local coordinator include support for local projects, database access, training resources and quarterly coordinator meetings. If you are interested in becoming more involved with Georgia Adopt-A-Stream, please contact the Georgia-Adopt-A-Stream state office at 404.675.6240.

Adopt-A-Stream Growth 1995-2007

Year	Workshops	Trainers	Certifications
1995	5	1	11
1996	14	5	71
1997	22	5	205
1998	35	6	398
1999	78	11	852
2000	54	12	587
2001	88	19	618
2002	120	26	909
2003	154	41	1448
2004	143	32	1182
2005	139	42	1228
2006	170	56	1992
2007	207	55	2000

Adopt-A-Stream Partners with the Total Maximum Daily Load Program and Regional Development Centers

At Georgia EPD Watershed Protection Branch, the TMDL (Total Maximum Daily Load) Implementation Program has been cooperating with the Adopt-A-Stream program and the Ambient Monitoring Unit in the development of monitoring procedures that Regional Development Centers and other local groups may use to: 1) determine whether water bodies should be retained on the state's list of impaired waters, and 2) conduct "targeted" watershed monitoring to evaluate potential nonpoint sources of pollution.

While originally intended to provide an option for TMDL implementation plan revision when water quality data used to list a segment for elevated bacteria or depleted dissolved oxygen was more than five years old, the procedures for evaluating those constituents are now available to any competent local group willing to prepare and submit a Sampling

Quality Assurance Plan (SQAP) to EPD and properly collect and report the results to EPD. The procedures for conducting targeted watershed monitoring for dissolved oxygen and bacteria using *E. coli* as a surrogate for fecal coliform were devised to assist Regional Development Centers in conducting watershed surveys to geographically isolate significant sources of impairments for extensive TMDL Implementation Plan revisions.

These procedures are available to local watershed groups interested in conducting watershed assessments. In both of these cases, the Regional Development Centers are encouraged to coordinate with or enlist the support of local watershed and Adopt-A-Stream groups.

Contributed by Ted Mikalsen, Acting Program Manager of the Total Maximum Daily Load Implementation Program

Adopt-A-Stream Database Tips

Georgia Adopt-A-Stream's online database is up and running, and since April, volunteers all over the state of Georgia have been entering their chemical and biological monitoring forms online. The database allows users to view and monitor trends at their stream sites, and can also show you data from other groups. In the near future, however, we would like the database to serve as an important networking tool that will put volunteers in contact with their local AAS coordinators and neighboring monitoring programs. Have you logged into the database lately to check out all of this great stuff?

Go to: www.georgiaadoptastream.org

Clicking on this link will bring you to a page with all four of Georgia EPD's education and outreach programs

- Click on Georgia Adopt-A-Stream to get to our website
- Bookmark this page for your later viewing as the calendar displays important dates and information about upcoming AAS events
- On the website in the left hand side, you will see 'On-line Data Entry'
 - Click on that link
 - You will see a login screen with two entry fields: e-mail address and password
- Type in your e-mail address
 - After entering your e-mail address, click on the box that says: 'E-mail my password'

Your Adopt-A-Stream password is going to be emailed to you so be sure to check your email to retrieve it. Once you have your password, get back to the login screen and enter in your email address and your new password

- Congratulations, you are now able to access the database and enter your water-quality data!

Important note: While we encourage everyone to become familiar with using the online database, only QA/QC certified volunteers can register new monitoring sites and add stream monitoring data. See the calendar to attend your first workshop, or contact your local AAS coordinator to see if one can be scheduled for you.

Amphibian Monitoring Program Gaining Speed at Georgia Adopt-A-Stream

One of Adopt-A-Stream's lesser-known programs is their Amphibian Monitoring Program. Though the program is not fully developed yet, it has gained a lot of speed this year with a large amount of interest and interaction.

So far this year Georgia Adopt-A-Stream has sponsored four Amphibian Monitoring Workshops in different locations throughout Georgia. At each workshop a guest herpetologist educates the participants on the natural history of amphibians, why they are important, what species are found in Georgia, how to monitor for them and how to recognize different frog calls. After the classroom presentation, the herpetologist takes the participants on an evening walk where they look and listen for amphibians in the area. This is a great program for Georgia Adopt-A-Stream to further develop and utilize since amphibians are good bioindicators of overall stream health.

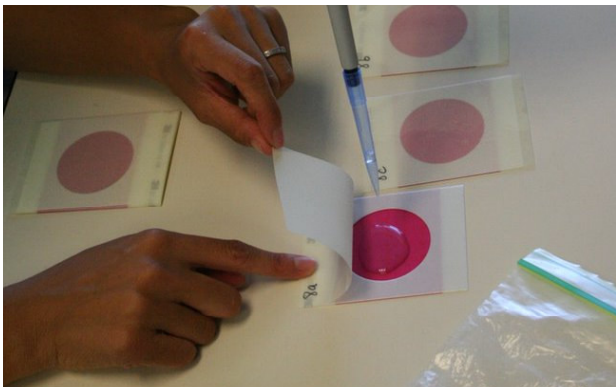
If you are interested in hosting or participating in an Amphibian Monitoring Workshop, contact the state office at 404.675.6240. Workshops will generally be held in May and June of each year at locations throughout the state. To learn more about Georgia's amphibian populations, refer to *Amphibians and Reptiles of Georgia* published by The University of Georgia Press.

Coming Soon: Adopt-A-Stream *E-coli* Monitoring Manual

The Adopt-A-Stream Bacterial Monitoring manual is set for release by this fall as testing and editing are coming to a close shortly.

The protocol for this manual has been developed to make it easy to track *E. coli*, which the US EPA recognizes as a good indicator bacteria for assessing risks to human health from potential pathogens.

Once the manual is completed, workshops will be available to train volunteers and trainers in this new Adopt-A-Stream protocol, which involves plating 3M Petrifilm medium (pictured below) and using egg incubators for incubation.



Rivers Alive 2008

This year marks ten years of Rivers Alive across Georgia! To celebrate, this year's t-shirt will commemorate the last ten years of cleanups.

If you would like to volunteer with a Rivers Alive cleanup in your area this fall, go to www.riversalive.org or e-mail riversalive@gaepd.org.

Georgia Adopt-A-Stream Certifications

You can obtain any of the following certifications through attending a workshop taught by a certified AAS instructor. Teachers can receive one PLU credit for participating (see the AAS website 'Teacher's Corner' link for more details).

Certification	Description
Chemical Monitoring	Testing for pH, dissolved oxygen, temperature and conductivity
Biological Monitoring	Taking inventory of macroinvertebrates in the stream to review water and habitat quality
Intro/ Visual Monitoring	Understanding and assessing the watershed and a visual and physical evaluation of stream conditions
Chem/ Bio Recertification	Certifications must be renewed annually
Bacterial Monitoring (coming soon)	Sampling for <i>E.coli</i> bacteria as an indicator of potential health hazards associated with polluted water

For more information as well as the time and location of upcoming workshops, visit www.georgiaadoptastream.org.

The Georgia Adopt-A-Stream Newsletter is published six times per year. For more information about the Georgia Adopt-A-Stream program or to contribute to the newsletter, call or write to:

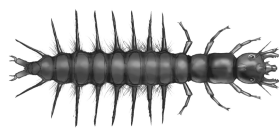
Georgia Adopt-A-Stream
Environmental Protection Division
4220 International Parkway, Suite 101
Atlanta, GA 30354
404.675.6240
www.georgiaadoptastream.org



Dragonfly



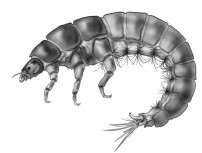
Riffle Beetle



Dobsonfly



Stonefly



Net Spinning Caddisfly

