

Georgia Adopt-A-Stream Introduction

Georgia
Adopt-A-Stream
Volunteer Water Quality Monitoring

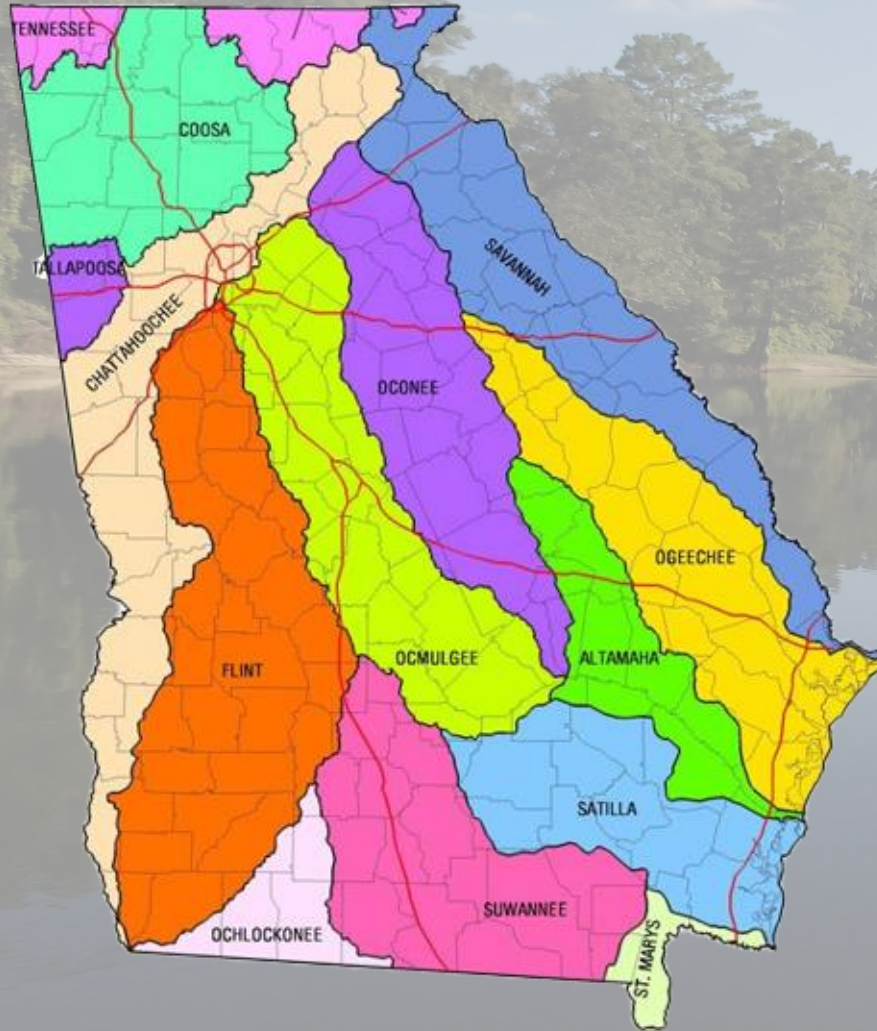


What is a Watershed?

- A land area from which water, sediment, and dissolved materials drain to a common point along a stream, wetland, lake, or river.
- Its boundaries are defined by the highest points of land around the waterbody.



Where is Your Watershed?



Point vs. Nonpoint Source Pollution

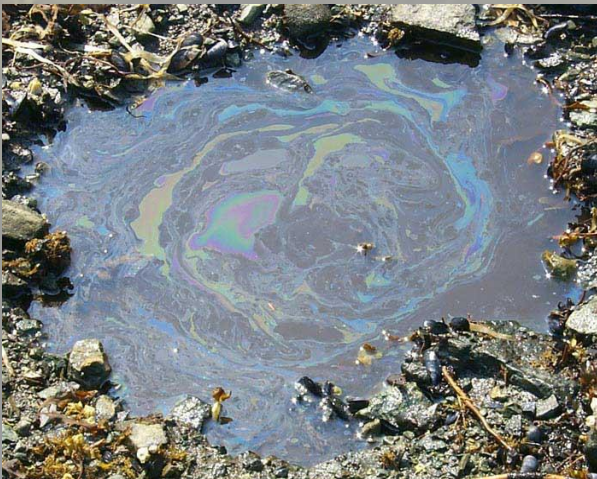
- **Point Source**
 - Easily identifiable pollutant source
 - Regulated by GA EPD through the NPDES permitting process



Point vs. Nonpoint Source Pollution

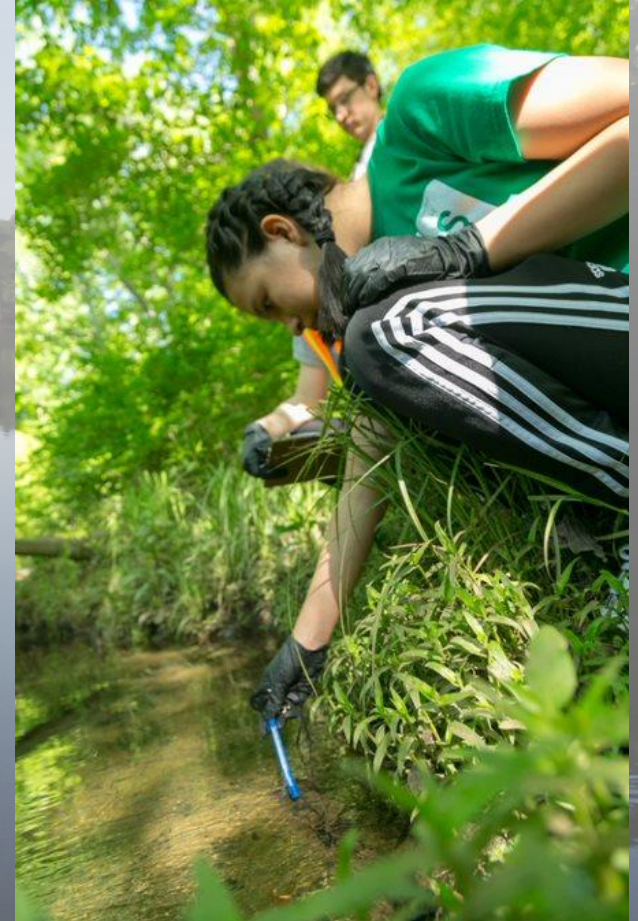
- **Nonpoint Source**

- Sources that are not easily distinguishable or identifiable
- Everyone contributes
- The main cause of water quality problems in GA



Why Monitor Water Quality?

- Our quality of life is directly related to the quality of the rivers, streams and wetlands around us.
- Regular monitoring provides baseline information about the health of our local streams and other water bodies.
- All the water we have now is all the water we'll ever have!



What is Georgia Adopt-A-Stream?



Georgia Adopt-A-Stream

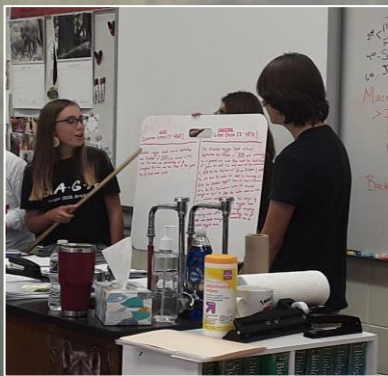
A citizen science water quality monitoring program encouraging all Georgians to get familiar with their watersheds, monitor impacts, improve streams, rivers, wetlands, lakes, and estuaries, and inform others about their effect on water quality.

Georgia
Adopt-A-Stream
Volunteer Water Quality Monitoring



A

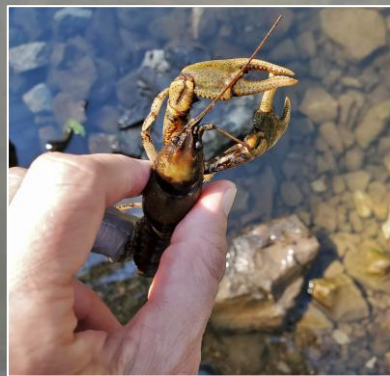
Awareness



Increase public **awareness** of nonpoint source pollution & water quality issues

D

Data



Collect baseline water quality **data** according to Adopt-A-Stream protocols

O

Observations



Take **observations** of sites to note water quality conditions

P

Partnerships



Seek **partnerships** with local gov'ts, nonprofits, & other organizations to share results & resources

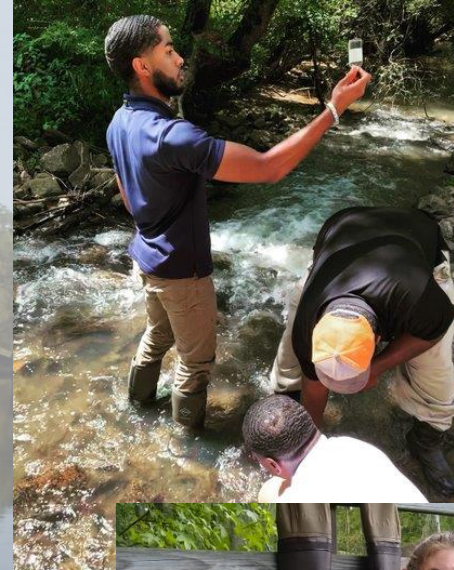
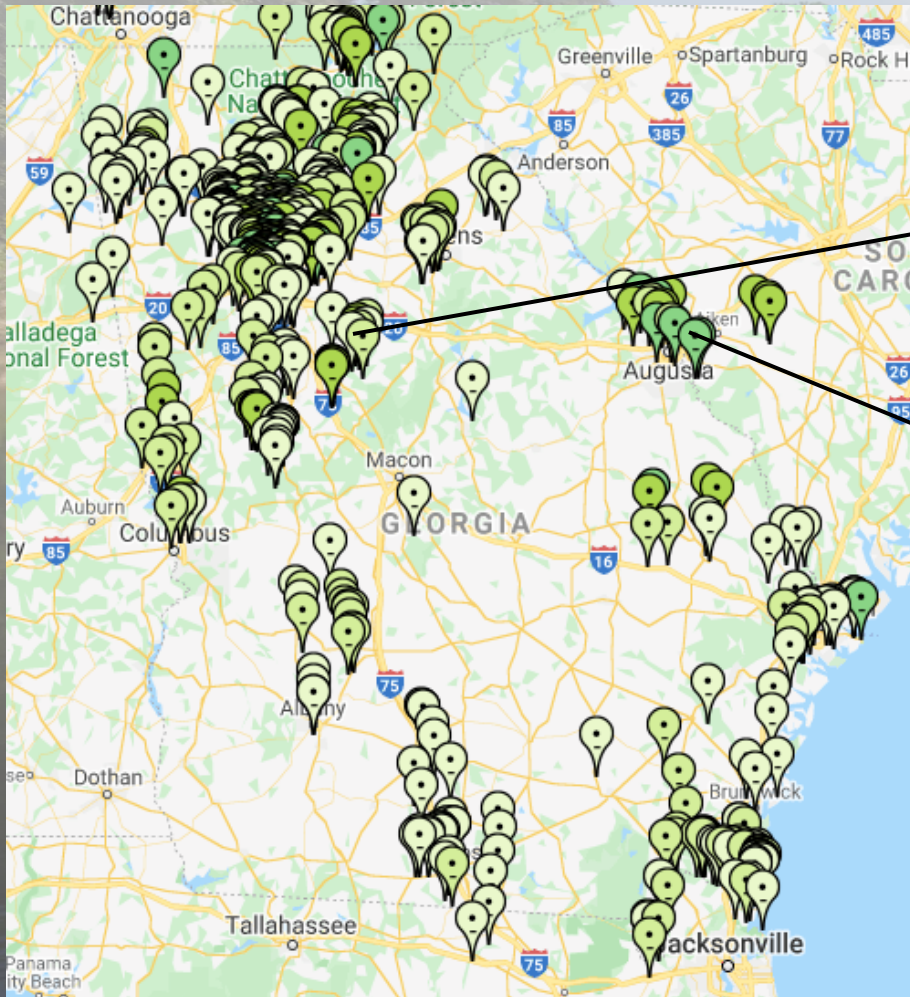
T

Tools & Training



Utilize **tools & training** provided by staff & local coordinators

Volunteer Network and Support



Volunteer Network and Support



Getting Started with AAS

1. Determine Your Goals
2. Attend a Monitoring Workshop
3. Form a Group and Select a Site
4. Obtain Equipment
5. Start Monitoring!

Determine Your Goals

- Questions to consider:
 - Why do I want to monitor?
 - What site might I like to adopt?
 - What type of data do I want to collect?
 - Who might be interested in my data?
- Can be driven by group, site, community, etc.
- Goals may shift over time, but can help focus monitoring efforts and maintain participation



Attend a Monitoring Workshop

- QA/QC workshops
 - Quality Assurance/Quality Control
 - Procedure based data collection
 - More frequent monitoring
- Non-QA/QC workshops
 - Observational data collection
 - Less frequent monitoring
- Allows you to create an AAS account



QA/QC Monitoring Programs

Macroinvertebrate

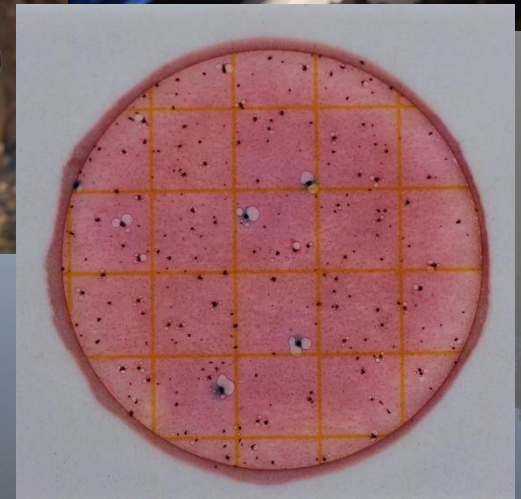
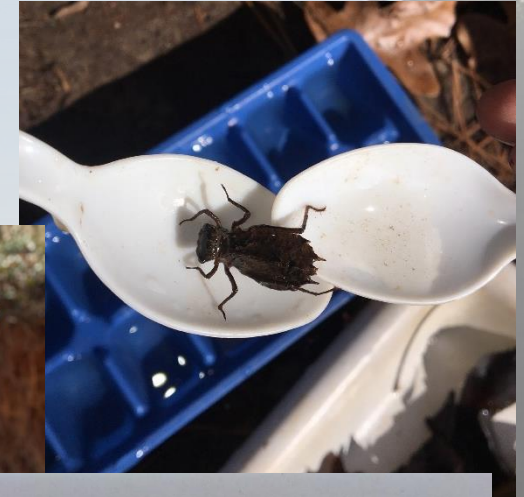
- Test for stream macroinvertebrate diversity
- Survey quarterly or once every season

Chemical

- Test for basic parameters: dissolved oxygen, temperature, pH, & conductivity
- Survey monthly

Bacterial

- Test for *E. coli* bacteria, which can indicate the presence of pathogens
- Survey monthly



Quality Assurance Project Plan

- Certification
 - QA/QC and Trainer workshops
 - Annual recertifications
 - Consistent monitoring schedule and set protocol
- Database
 - Only certified volunteers can enter and edit data
 - Errors and warnings



Non-QA/QC Monitoring Programs

Watershed Survey

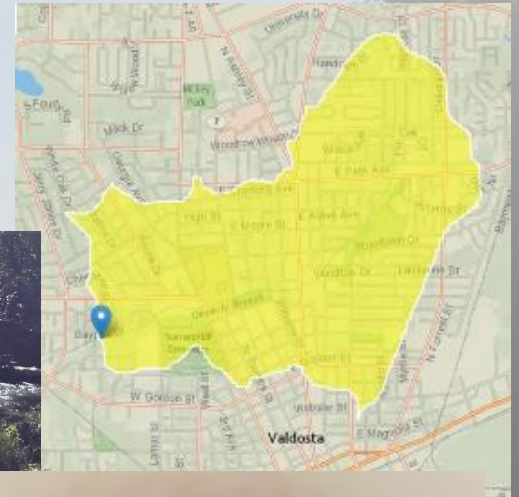
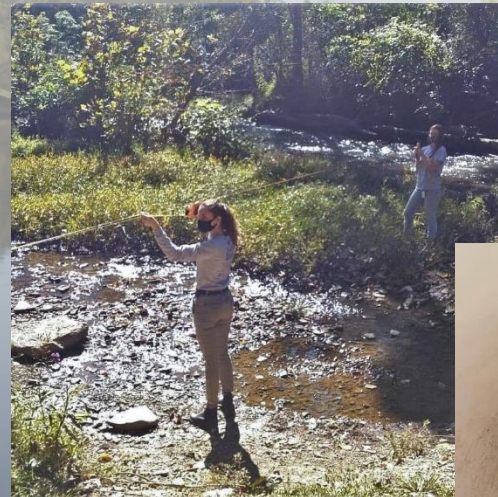
- Map your watershed and conduct survey of the land uses around your waterbody
- Survey annually

Visual Stream Monitoring

- Visual and physical evaluation of stream conditions
- Survey quarterly or once every season

Amphibian Monitoring

- Passively monitor for frogs and salamanders
- Survey quarterly or once every season



Form a Group and Select a Site

- Form a Group
 - Must register a group to register site and enter data
 - Can be an individual, but recommend at least 2 people
 - Community groups, classes, families, etc.
- Select a Site
 - AAS does not assign sites
 - Ask local coordinators for suggestions
 - Easy, safe, and legal to access!



Obtain Equipment

- Purchasing info on AAS website
- Reach out to local coordinator for loan
- Contact state office



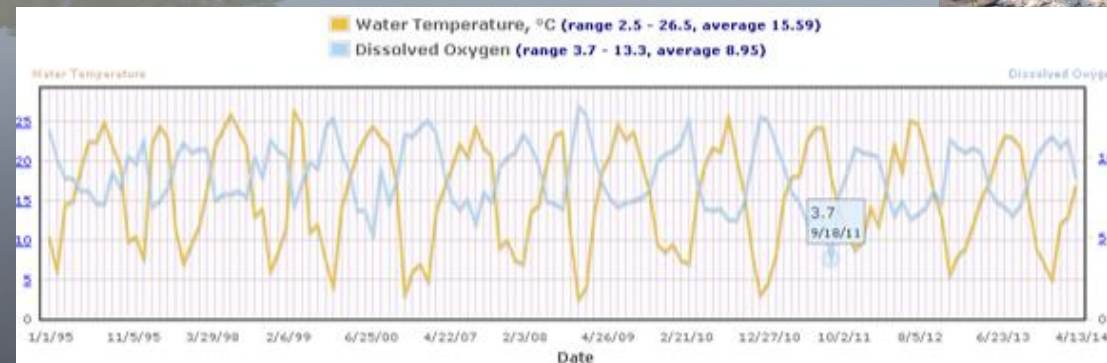
Start Monitoring!

- Set up monitoring schedule
- Consistently monitor one or more sites
- Submit and review data
- Follow up on problems

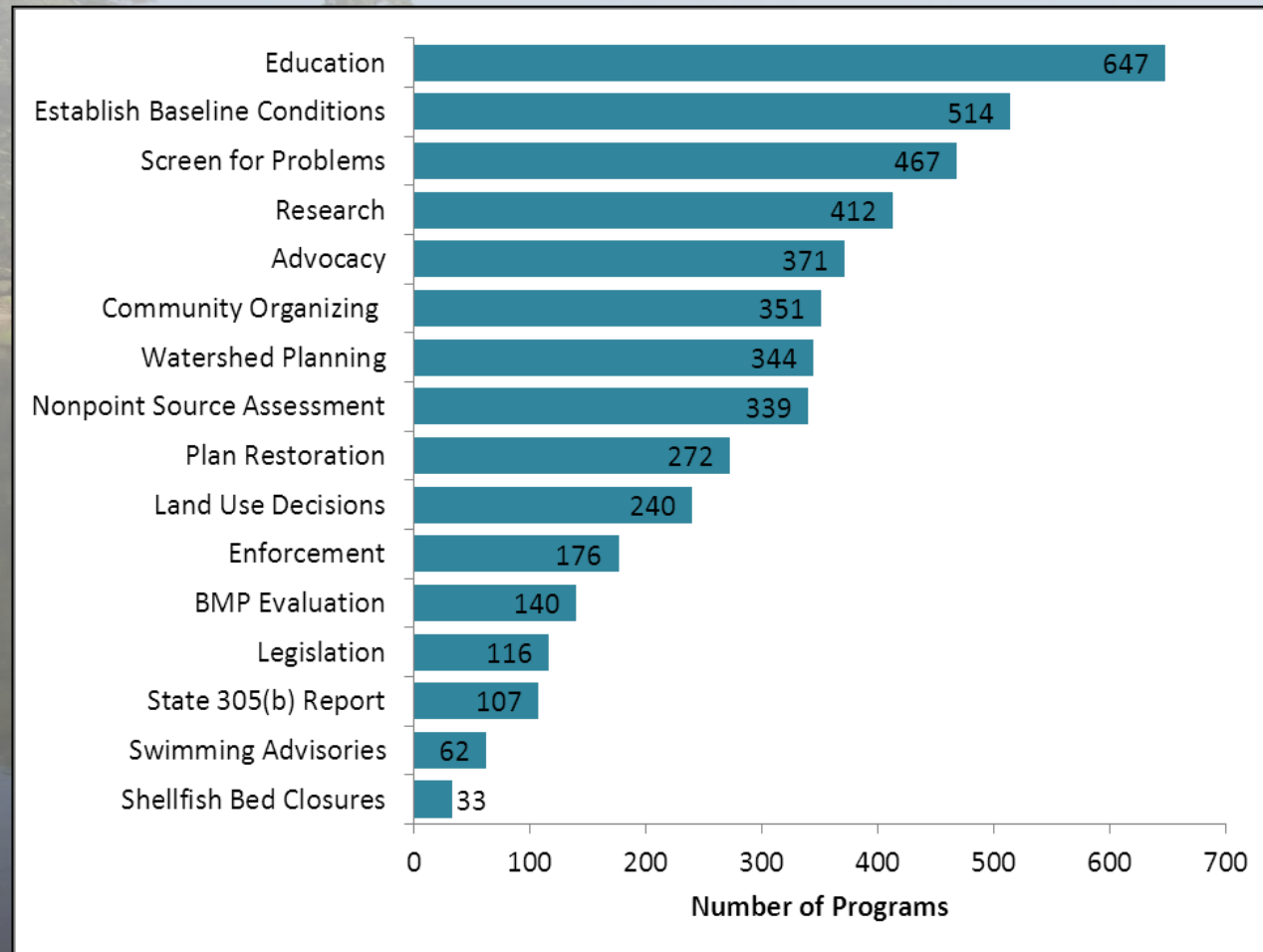


How are your data used?

- Establish baseline conditions for waterbodies across the state
- Discover and report water quality issues
- Educate your community
- Help inform status of streams for 303d/305b list

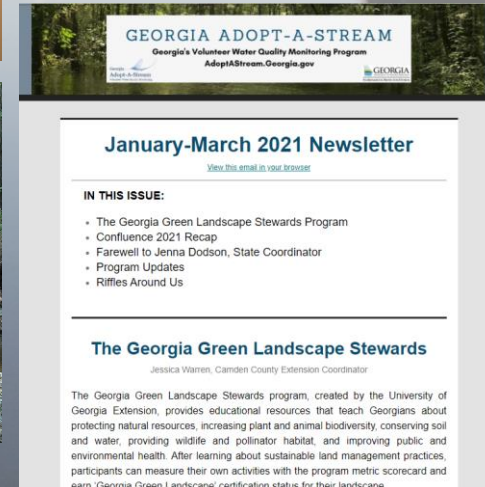


Volunteer Monitoring Data Uses



More Ways to Get Involved

- Confluence
 - Annual volunteer conference
 - Expert talks and workshops
 - Networking and social events
- Awards
 - Volunteers
 - Trainers
 - Watershed groups
- Quarterly E-Newsletter
- Green Infrastructure
 - Stream restoration
 - Rain gardens and barrels



AAS Website - Get Involved

An official website of the State of Georgia. [How you know](#) ▼

Language: English Organizations A-Z

Georgia Adopt-A-Stream Volunteer Water Quality Monitoring

Search

Get Involved Confluence Citizen Monitoring Data Views Data Entry Materials & Resources My Profile

Get Started with Adopt-A-Stream

Find your local AAS Coordinator

Workshop Calendar

Workshop Descriptions

Adopt-A-Stream Newsletters

Science & News

Stream Stewardship

Meet the AAS Team

Volunteer FAQs


g Guidelines

nteers is top priority.

About Us

Georgia Adopt-A-Stream encourages individuals and communities to monitor and/or

<https://adoptastream.georgia.gov/how-do-i-get-started-adopt-stream>



AAS Website - Data Entry

An official website of the State of Georgia. [How you know](#) ▼

Language: English Organizations A-Z

Georgia Adopt-A-Stream Volunteer Water Quality Monitoring

Search

Get Involved Confluence Citizen Monitoring Data Views **Data Entry** Materials & Resources My Profile

NOTICE: COVID-19 Sampling Guidelines


The health and safety of AAS volunteers is top priority. [Please find our guidelines here.](#)

About Us

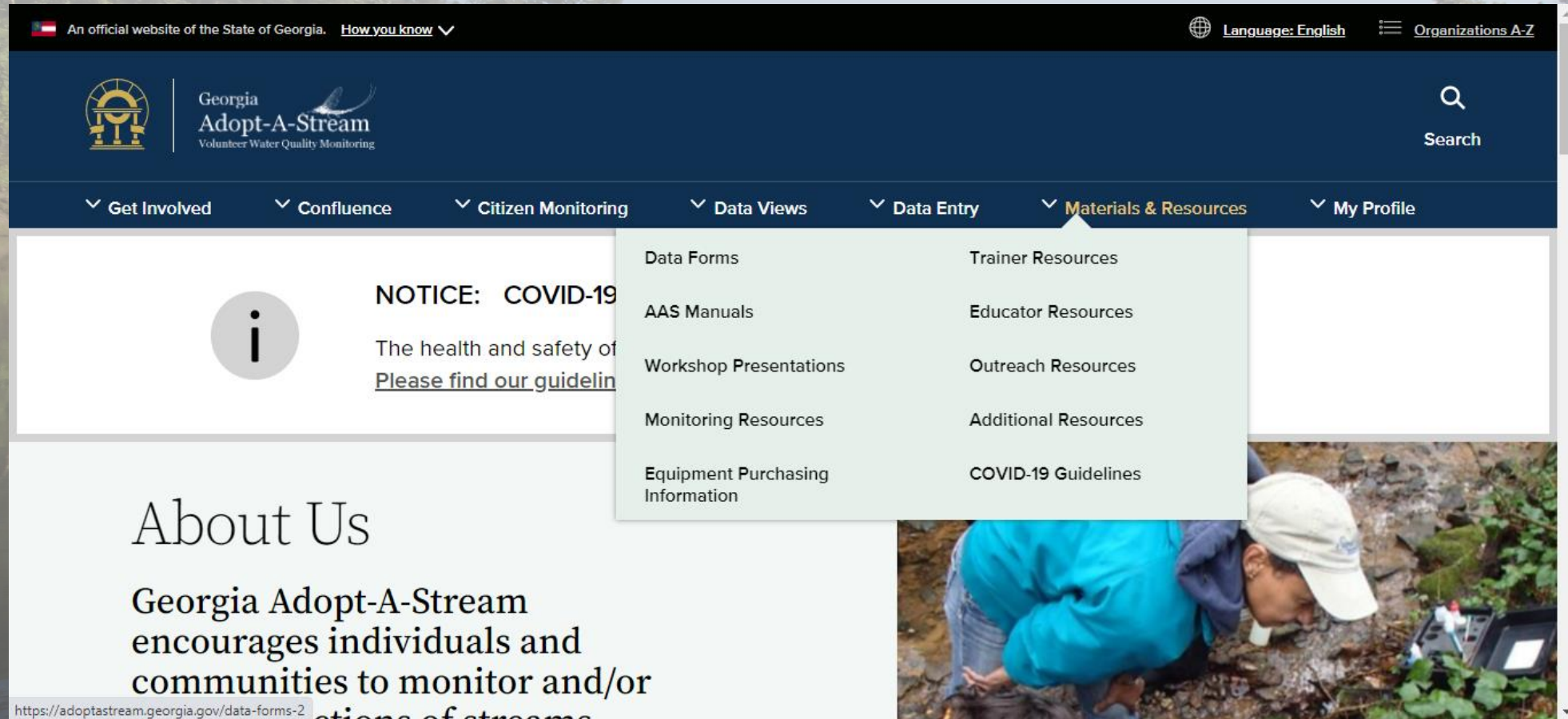
Georgia Adopt-A-Stream encourages individuals and communities to monitor and/or maintain sections of streams.

<https://aas.gaepd.org/Submission.aspx>

Data Submission Form
Register Group or Site
Trainers: Enter Workshop Data
Trainers: Certificates & Letters
Trainer Workshop History



AAS Website - Materials & Resources



The screenshot displays the Georgia Adopt-A-Stream website. At the top, a dark blue header contains the state of Georgia logo, the text "An official website of the State of Georgia. [How you know](#) ✓", a globe icon, "Language: English", and a menu icon with "Organizations A-Z". Below this is a dark blue navigation bar with the Georgia Adopt-A-Stream logo and tagline "Volunteer Water Quality Monitoring" on the left, and a search icon and "Search" text on the right. The main navigation bar is dark blue with white text for "Get Involved", "Confluence", "Citizen Monitoring", "Data Views", "Data Entry", "Materials & Resources" (highlighted with a white arrow), and "My Profile". A dropdown menu for "Materials & Resources" is open, showing a two-column list of links: "Data Forms", "AAS Manuals", "Workshop Presentations", "Monitoring Resources", "Equipment Purchasing Information", "Trainer Resources", "Educator Resources", "Outreach Resources", "Additional Resources", and "COVID-19 Guidelines". On the left side of the page, there is a white box with an information icon and the text "NOTICE: COVID-19 The health and safety of Please find our guidelin". Below this is a section titled "About Us" with the text "Georgia Adopt-A-Stream encourages individuals and communities to monitor and/or". At the bottom left, a URL is visible: "https://adoptastream.georgia.gov/data-forms-2". On the right side, there is a photograph of a person in a blue shirt and white cap working in a stream.

An official website of the State of Georgia. [How you know](#) ✓

Language: English Organizations A-Z

Georgia Adopt-A-Stream Volunteer Water Quality Monitoring

Search

Get Involved Confluence Citizen Monitoring Data Views Data Entry **Materials & Resources** My Profile

NOTICE: COVID-19
The health and safety of
[Please find our guidelin](#)

About Us
Georgia Adopt-A-Stream encourages individuals and communities to monitor and/or

<https://adoptastream.georgia.gov/data-forms-2>

Data Forms
AAS Manuals
Workshop Presentations
Monitoring Resources
Equipment Purchasing Information
Trainer Resources
Educator Resources
Outreach Resources
Additional Resources
COVID-19 Guidelines

Other EPD Outreach Programs

- **Rivers Alive-** Georgia's statewide annual volunteer waterway cleanup program
- **Project WET** (Water Education Today)- Curriculum designed for formal and non-formal educators of K-12 students to promote stewardship of water resources
- **River of Words-** Annual youth poetry and art contest that inspires children to translate observations of their watersheds into creative expression



Follow AAS and Stay Connected!



aas@dnr.ga.gov



AdoptAStream.Georgia.gov



facebook.com/georgiaadoptastream



@georgiaadoptastream



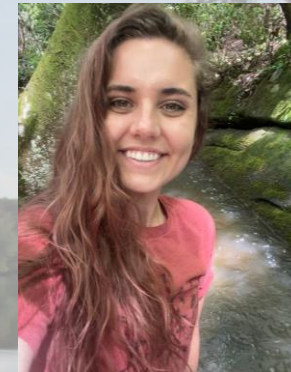
2 Martin Luther King Jr. Drive
Suite 1462, East Tower
Atlanta, Georgia 30334



470.938.3341
470.524.5791



Harold Harbert, Watershed
Outreach Manager



Bailey Crapps Sauls, AAS
State Coordinator



Cecilia Nachtmann, AAS
State Coordinator



Jackie Encinas, Outreach
Specialist